

# Hina spa

Hilton  Bora Bora Nui Resort & Spa



2011 Signature Therapies and Massage  
Prices in Pacific francs (XPF), VAT & taxes included

## Packages and Special Offers

Packages cannot be shared between guests, and unless otherwise specified all components of the service must be received on the same day.

### **Ta'u Here - Time For Two Special /**

A skin-and-muscle softening hydrotherapy bath of your choice is the perfect prelude to a relaxing body massage.

50 mins massage with 30 mins. bath 30 000 cfp / 2 pers  
80 mins massage with 30 mins. bath 37 500 cfp / 2 pers

### **Ta'u Here i Te Fare - In-Room "Honeymoon Sweet"**

Take "Time for Two" in the comfort and privacy of your own bungalow. You choose an aromatherapy bath to enjoy after your relaxing body massage. (50 or 80 minutes massage time, bath at your leisure).

50 mins massage with bath 35 000 cfp / 2 pers  
80 mins massage with bath 42 500 cfp / 2 pers

### **Sea the Difference**

Sea the Difference - After a full-length Pape Miti body scrub, enjoy a mini version of the Te Miti wrap featuring Pacific marine algae and green tea for a detoxifying, skin-toning release. Your body will thank you!

80 mins. 18 500 cfp / 1 pers. 31 500 cfp / 2 pers

### **Mahana Here**

After sun treatment - Sun-lovers rejoice! This healing and regenerative treatment will minimise the negative effect of over-exposure to the sun. Begin with a gentle Ginger-Coconut exfoliation, then the healing wonders of aloe and Tamanu are massaged into your skin in a combination Maohi Nui massage and Mahana Maru Body Wrap.

80 mins. 22 500 cfp / 1 pers 40 000 cfp / 2 pers

### **Bora Nui Experience**

Relax and enjoy the view in your choice of aromatherapy bath, then your choice of body polish will smooth and cleanse your skin. After, a relaxing body massage will complete this experience of paradise.

80 mins. 22 500 cfp / 1 pers 40 000 cfp / 2 pers

### **Head to Toe Beauty**

Pampering for when you need it most. Enjoy a full Hina Spa Classic Facial, then live it up with Champagne and the Classic versions of our Manicure and Pedicure.

+/- 2h45 mins. 22 500 cfp / 1 pers

### **Skin Deep**

First enjoy a full-body, relaxing massage, then ease gracefully into an Express facial designed just for you!

80 mins. 18 500 cfp / 1 pers 31 500 cfp / 2 pers

### **Rainy Day Relax**

On "one of those days," nothing could beat our Ofai Ve'a Hot Stone massage, an Express Facial, Hina Spa Classic Manicure, an Express Pedicure and a steaming cup of chocolate or tea to beat the blues.

+/- 3h45 mins. 34 500 cfp / 1 pers

### **The Executive Order**

Includes 50 minutes Head Neck, Shoulders and Back massage, Atu Atu Tane express facial, Tres Homme express manicure, and refreshment. Can be upgraded to include full manicure or pedicure, Hair and Scalp Massage, and/or other options. You're the boss! Please inquire with spa concierge.

+/- 120 mins. 22 500 cfp / 1 pers

### **Nehe Nehe**

Begin with an uplifting floral foot bath for yourself or the couple, then delight in an exhilarating body scrub and moisturizing body wrap. After you enjoy some private time in the jacuzzi savouring a plate of mignardise and Champagne, we complete the treatment with a relaxing body massage and soothing facial. Total rejuvenation.

+/- 4 hrs. 42 500 cfp / 1 pers 75 500 cfp / 2 pers

### "Million Dollar View" Experience

Our famous open-air treatment that starts with an exotic foot bath and a body polish of our own formulation. Then experience a couple's massage with hair and scalp mask in one of the most exotic locations in Polynesia. End savouring a tropical fruit smoothie and "Polynesian Reflect," a plate of sashimi, fish tartar and "Poisson Cru," the national dish made of raw tuna and coconut milk.

120 mins. 29 500 cfp /1 pers 55 500 cfp /2 pers



## Massage Rituals

### Time for You or Time for Two\* -

Tailored to your personal preferences, a full-body massage with gentle to moderate pressure. Familiar and relaxing.

30 mins. 8 500 cfp /1 pers\* 13 500 cfp /2 pers\*  
50 mins. 11 500 cfp /1 pers 21 500 cfp /2 pers  
80 mins. 16 500 cfp /1 pers 30 000 cfp /2 pers

*\*The 30 mins. version is an abbreviated service and therefore not full-body. Must be taken in conjunction with an additional 50 minutes of service (minimum), not as a stand-alone treatment by itself.*

### Maohi Nui - Tahitian Massage

A fusion of traditional and modern Polynesian massage techniques. Non-specific and intuitive, characterized by deep forearm work, repetitive strokes and quicker pace.

50 mins. 13 500 cfp /1 pers 24 500 cfp /2 pers  
80 mins. 18 500 cfp /1 pers 31 500 cfp /2 pers

### Head, Neck, Shoulders and Back -

Specifically designed for those who carry their stress in their neck and shoulders, those who spend long hours at the computer, or those who would like to target specific zones for preference or effect.

30 mins. 8 500 cfp /1 pers\* 13 500 cfp /2 pers\*  
50 mins. 11 500 cfp /1 pers 21 500 cfp /2 pers

### Te Aito - Deep Tissue or Sports Massage -

Allow your mind to travel while your body finally lets go. A more intense massage intended to relieve stubborn knots and tension by working the body's muscle tissue against the bone structure. May include some stretching and manipulation of the limbs.

50 mins. 13 500 cfp /1 pers 24 500 cfp /2 pers  
80 mins. 18 500 cfp /1 pers 31 500 cfp /2 pers

### Sole to Soul - Head, Hands and Feet Massage

When you've been on your feet all day, a soothing foot massage can be the best reward. 50 minute includes footbath with volcanic stones, de-roughing, exfoliation, mask, and massage.

30 mins. 8 500 cfp /1 pers\* 13 500 cfp /2 pers\*  
50 mins. 11 500 cfp /1 pers 21 500 cfp /2 pers

### Ofai Ve'a Ve'a

Warm basalt stones, polished by the ocean and hand-picked from Tahiti's beaches are heated and used to warm your body and melt areas of chronic tension. With the deeply penetrating heat, techniques employing massage with the stones, hands and stones, and hands-only make this treatment perfect for a gentle detox, a cool cloudy day, or a powerful grounding.

80 mins. 18 500 cfp /1 pers 31 500 cfp /2 pers

You may request any of the above massage services (excluding the Ofai Ve'a Ve'a) to be performed a room at the spa, in the "Million Dollar View," or at your bungalow or terrace (Weather conditions permitting, additional charges may apply).

## REJUVINATING WATERS -

### Aromatherapy Baths -

8 500 cfp 1 pers /2 pers

**Coco** - A bath of coconut milk to nourish and soften your skin.

**Remu** - Hydrating bubble bath scented with Tiare.

**Citrus Lift** - A variety of citrus aromas superbly moisturize and revitalize your skin.

**Noa Noa** - A tiare scented, skin softening bath completely decorated with a variety of tropical flow



# Body Care and Rituals

A full-body scrub exfoliates the skin and increases circulation, which helps to purify the body and remove toxic build-up. As a pre-beach buff, these treatments provide the ideal base for a long-lasting tan with a radiant glow. .

## CLEANSING RITUALS

Unless followed by a wrap or other body treatment, each of the following cleansing rituals will include an application of your choice of monoi or a moisturizing lotion for a deeply relaxing treatment that will polish and scent the skin. 50 minutes allows for deeper exfoliation and longer application of moisturizer. Due to necessary preparation times, reservations are required in advance. Some treatments are prepared using the freshest fruits and flowers and are therefore subject to seasonal availability.

### Body Scrubs

30 mins. 8 500 cfp /1 pers\* 13 500 cfp /2 pers\*  
50 mins. 12 500 cfp /1 pers 23 500 cfp /2 pers

**Maru Maru** - An exotic scrub of grated coconut with ginger and lemongrass for a hydrating and gentler exfoliation.

**Tihota Ute Ute** - A luscious ginger, brown sugar, Tahitian vanilla scrub for a moderate exfoliation.

**Honey-Lime** - a delectable and uplifting, medium-strength sugar-powered exfoliation.

**Pape Miti** - Sea Salt and Ylang Ylang for a remineralizing, detoxifying effect and more aggressive body polish.

**One Ere Ere** - Tahitian Black Sand is paired with Sandalwood and ground Tamanu (the sacred nut of Tahiti) to provide a more aggressive body polish.

*\*The 30 mins. version is an abbreviated service and must be taken in conjunction with an additional 50 minutes of service (minimum), not as a stand-alone treatment by itself.*

## NURTURING EMBRACE

Unless preceded by a body scrub, each of the following 50 minute body wraps begins with a lightly exfoliating dry brushing to stimulate circulation and prepare your skin to receive the active ingredients. Due to necessary preparation times, reservations are required in advance. Some treatments are prepared using the freshest fruits and flowers and are therefore subject to seasonal availability.

### Body Wraps –

30 mins. 8 500 cfp /1 pers\* 13 500 cfp /2 pers\*  
50 mins. 12 500 cfp /1 pers 23 500 cfp /2 pers

**Bora's Bounty** - Body mask of papaya and pineapple enriched with crème fraiche and monoi with vit. E

**Mahana Maru Wrap** - Effective after sun treatment with a base of cooling, locally grown aloe and regenerative tamanu.

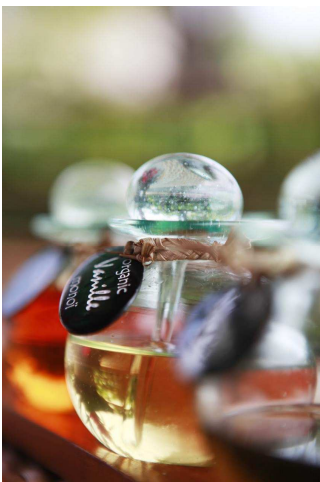
**Te Miti** - Active marine algae and green tea remineralize and tone the skin.

**Haari** - A specially formulated serum derived from locally grown coconuts. The warming effect from the placement of heated volcanic stones helps to warm the body, and open pores for better elimination and absorption.

*\*The 30 mins. version is an abbreviated service and must be taken in conjunction with an additional 50 minutes of service (minimum), not as a stand-alone treatment by itself.*

## TO COMPLETE YOUR TREATMENT

### Add-ons and Supplements



Body Massage*	8 500 cfp /1 pers* 13 500 cfp /2 pers*
Feet Massage	8 500 cfp /1 pers* 13 500 cfp /2 pers*
Body Scrub (your choice) *	8 500 cfp /1 pers* 13 500 cfp /2 pers*
Body Wrap (your choice) *	8 500 cfp /1 pers* 13 500 cfp /2 pers*
Hair and Scalp treatment	4 000 cfp /1 pers* 7 500 cfp /2 pers*
Express Facial*	8 500 cfp /1 pers* 13 500 cfp /2 pers*
Express Manucure	4 500 cfp /1 pers
Express Pedicure	6 500 cfp /1 pers

*\*The 30 mins. version is an abbreviated service and therefore not full-body. All add-ons must be taken in conjunction with an additional 50 minutes of service (minimum), not as a stand-alone treatment by itself. Due to necessary preparation times, reservations are required in advance.*

## Beauty Care and Rituals

Each of the following facial treatments is designed just for you and your skin type. Those that are 50 minutes or longer all include an analysis and the following services: Deep pore cleansing and toning, exfoliation, warm vaporizing mist, relaxing hands, face, neck, shoulders massage, and customized face mask. The deluxe versions and our Te Miri Miri four Hands Facial include even more products and techniques. (Specific techniques and products will vary by skin type).

### Facial Treatments

Formulated for your skin type. After a brief assessment, you and your therapist will choose which products best suit your skin type.

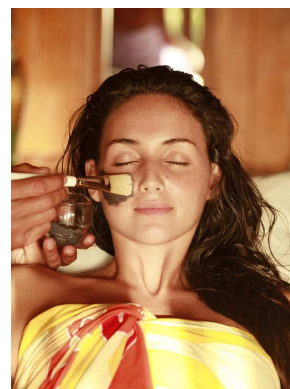
*Express 30 mins. 9 000 cfp /1 pers\* 14 500 cfp /2 pers\**  
*Classic 50 mins. 12 500 cfp /1 pers 23 000 cfp /2 pers*  
*Deluxe 80 mins. 19 500 cfp /1 pers 33 500 cfp /2 pers*

*\*The 30 mins. version is an abbreviated service and must be taken in conjunction with an additional 50 minutes of service (minimum), not as a stand-alone treatment by itself.*

**Te Miri Miri - Four Hands Facial** - Formulated for your skin type. Two therapists work cooperatively to guide your skin and body to a new level of radiance and relaxation--your primary estheticienne focuses on radiance while your secondary therapist focuses on relaxation.

*50 mins. 21 500 cfp /1 pers 40 000 cfp /2 pers*

*For your comfort and protection, please remove contact lenses prior to your treatment, and avoid scheduling facial depilation services within 24 hours before or after your rendez-vous.*



## Hands, Feet, and Nails

### Hina Spa Manicure

Soak, nail cutting and shaping, cuticle treatment and hand massage

*Express 30 mins. 3 800 cfp /1 pers*  
*Classic 50 mins. 5 500 cfp /1 pers*  
*Deluxe 80 mins. 8 000 cfp /1 pers*

### Hina Spa Pedicure

Soak, nail cutting and shaping, cuticle treatment and foot massage

*Express 30 mins. 5 500 cfp /1 pers*  
*Classic 50 mins. 8 000 cfp /1 pers*  
*Deluxe 80 mins. 10 500 cfp /1 pers*

### Faux Nails and Nail Art

*Price and time vary in relation to scope and complexity of work.*

## Hair Care

### Atu Atu Rouru

A nourishing hair treatment straight from the tropics! A mask of banana, lime, vanilla-scented monoi and vitamin E is massaged into your hair and scalp, stimulating the scalp and hair follicles for growth. Hair emerges repaired, strengthened, and protected from the environmental stresses of sea and sun.

*30 mins. 4 000 cfp /1 pers 7 500 cfp /2 pers*  
*80 mins. 18 500 cfp /1 pers 31 500 cfp /2 pers*

## Epilation

Waxing is a convenient, cost-effective, longer lasting and quick method of removing unwanted and unsightly hair from virtually any part of the body. As it removes hair directly from the roots you won't have to worry about hair re-growth for between 3-6 weeks.

Upper Lip	1700 cfp	Half Leg	5500 cfp
Chin	1700 cfp	3/4 Leg	6500 cfp
Eyebrows	2500 cfp	Full Leg	7500 cfp
Full Face	5500 cfp	Bikini	6000 cfp
Underarm	3500 cfp	Brazilian	7500 cfp
Arms	5500 cfp		

Other waxing services available upon request, please inquire with our spa concierge or directly with your estheticienne.

Please note that epilation may not be compatible with other spa or heat treatments within 24 hours before or after your treatment. Note also that waxing is unsuitable if you are using Retin-A or Accutane or if your skin has been sensitized by the sun or other treatments.

## Tres Homme - Especially for Men

### Te Aito - Deep Tissue *or* Sports Massage

Allow your mind to travel while your body finally lets go. A more intense massage intended to relieve stubborn knots and tension by working the body's muscle tissue against the bone structure. May include some stretching and manipulation of the limbs.

50 mins. 13 500 cfp /1 pers

80 mins. 18 500 cfp /1 pers

### Head, Neck, Shoulders and Back

Specifically designed for those who carry their stress in their neck and shoulders, those who spend long hours at the computer, or those who would like to target specific zones for preference or effect.

30 mins. 8 500 cfp /1 pers\*

50 mins. 11 500 cfp /1 pers

### Ofai Ve'a Ve'a

Warm basalt stones, polished by the ocean and hand-picked from Tahiti's beaches are heated and used to warm your body and melt areas of chronic tension. With the deeply penetrating heat, techniques employing massage with the stones, hands and stones, and hands-only make this treatment perfect for a gentle detox, a cool cloudy day, or a powerful grounding.

80 mins. 18 500 cfp /1 pers

### Atu Atu Tane - Men's Facial

A facial specially designed for men that protects against the harsh aging effects of shaving and environmental damage. The face is deeply cleansed and polished to bring back a radiance and vitality to the skin.

Express 30 mins. 9 000 cfp /1 pers\*

Classic 50 mins. 12 500 cfp /1 pers

Deluxe 80 mins. 19 500 cfp /1 pers

For your comfort and protection, please remove contact lenses prior to your treatment, and avoid shaving within 6 hours before your rendez-vous.

### Te Tu'a Hiro - Back Facial

The skin is deeply cleansed, exfoliated, and retexturized. Next, warm steam will help open pores for the removal of deeper impurities. This treatment helps to calm congested areas of the back, as well as soothe sun-damaged skin. As a finishing touch, skin receives application of warm purifying lotion.

50 mins. 14 500 cfp /1 pers

### Atu Atu Rouru

A nourishing hair treatment straight from the tropics! A mask of banana, lime, vanilla-scented monoi and vitamin E is massaged into your hair and scalp, stimulating the scalp and hair follicles for growth. Hair emerges repaired, strengthened, and protected from the environmental stresses of sea and sun.

30 mins 4 000 cfp /1 pers\*

50 mins. 7 500 cfp /1 pers

*Tres Homme Express Manicure (30 minutes)*  
*Tres Homme Express Pedicure (45 minutes)*

*30 mins. 3 500 cfp /1 pers*  
*30 mins. 5 500 cfp /1 pers*

**Men's Waxing Services**

Chest	from	6 500 cfp
Chest and Abdomen	from	9 500 cfp
Shoulders	from	5 500 cfp
Lower Back	from	5 000 cfp
Back and Shoulders	from	10 000 cfp

Other waxing services available upon request, please inquire with our spa concierge or directly with your estheticienne.

